

Metallized Polypropylene Film Capacitor(Axial Lead) Snubber/Switching Application

SLV

订购基本规格

EXPLANATION OF ARTICLE CODE

SLV-	105	K	3A	A	46	L	L
①	②	③	④	⑤	⑥	⑦	⑧

① Capacitor Type

TYPE	SLV
CODE	SLV-

② Rated Capacitance (EIA Code)

The rated Capacitance value of the product is indicated with three digits. The first two digits indicate the two most significant digits of the capacitance value, and the third digit gives the number of following zeroes. This gives the capacitance value expressed in picofarads.

Examples:

105	=	1,000,000pF	=	1,000nF	=	1uF
106	=	10,000,000pF	=	10,000nF	=	10uF

③ Capacitance Tolerance


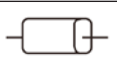
TOLERANCE	±5%	±10%	±20%
CODE	J	K	M

④ Rated Voltage

Code for DC Voltage: (expressed in one digit & one letter code)

VOLTAGE	630V	700V	800V	850V	900V	1000V	1100V	1200V	1250V	1500V	1600V	1800V	2000V	2500V	3000V
CODE	2J	2S	SK	ST	SU	3A	3L	3M	3B	3N	3C	3Q	3D	3E	3F

⑤ Lead Configuration

CODE	A	
LEAD TYPE		

⑥ Length

Unit: mm

Lead Pitch	29.0	34.0	46.0	55.0	59.0
CODE	29	34	46	55	59

⑦ Lead Forming Pitch

Lead Pitch	N/A
CODE	L

⑧ Lead Length

Lead Pitch	N/A
CODE	L

Metallized Polypropylene Film Capacitor(Axial Lead) Snubber/Switching Application

SLV

High voltage and current adsorption capacitor consists of wound metallized polypropylene film and double sided metellized film in series winding, outer wrapt by polyester film tape and end sealed by epoxy resin. They are suitable for snubber, industrial and motor speed controls, SMPS, and medium-high pulse applications



APPLICATIONS

Energy Conversion.

Power Semiconductor Circuits.

IGBT Modules Protection.

FEATURES

High peak & RMS current capagility

Low loss polypropylene dielectric

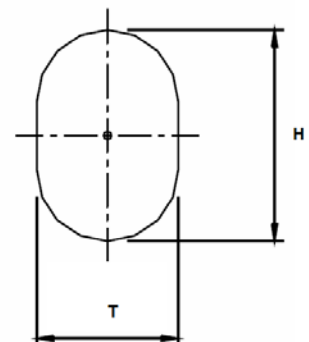
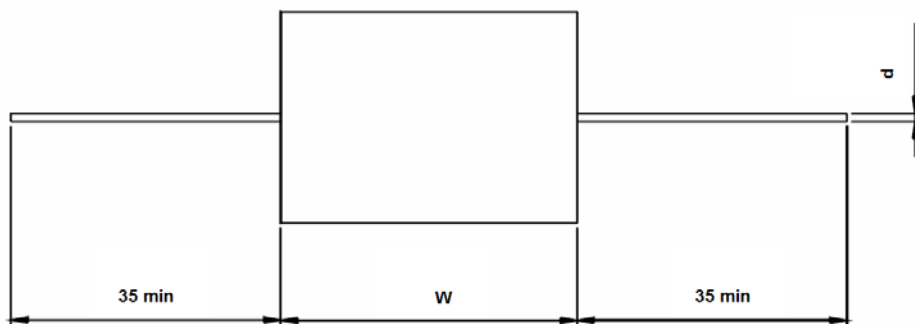
Self healing

Flame resistance case and resin

Multiple Lead Styles

SPECIFICATIONS

Operating Temperature:	-40°C - +85°C
Capacitance range:	0.01μF - 10.0μF
Capacitance Tolerance:	±5%(J), ±10%(K) at 1KHz
Rated Voltage:	700VDC - 3000VDC
Dissipation Factor:	<0.06% at 1 kHz, 25 °c
Dielectric Withstand:	2.0 x rated voltage for 10 seconds (terminal to terminal)
Insulation Resistance:	30,000 MΩ min. after 1 minutes of electrification @ 100 Vdc & 25 °C
Life Expectancy:	100,000 hours at Ur and 70 °C
Self Inductance:	≤1nH/mm of body length and lead wire length.
Lead Terminations:	Tinned copper leads (RoHS compliant)



Metallized Polypropylene Film Capacitor(Axial Lead) Snubber/Switching Application

SLV

■ DIMENSIONS / 产品尺寸 :

SIZE R.V. CAP(μF)	700 V D C							
	W (mm)	H (mm)	T (mm)	d (mm)	dv/dt (v/us)	I peak (A)	I _{rms} @100KHz +25°C (A)	ESR @100KHz +25°C mΩ
0.33	32.0	13.0	8.5	0.8	185	61.05	5.0	7.4
0.47	32.0	17.1	9.1	0.8	185	86.95	6.5	5.9
0.68	32.0	19.6	11.6	1.0	185	125.8	8.0	4.9
1.0	32.0	14.7	22.7	1.0	185	185	9.0	4.1
1.0	44	19.0	11.0	1.0	130	130	9.0	4.8
1.5	32.0	28.4	17.2	1.0	185	277.5	9.0	3.5
1.5	44.0	22.2	14.2	1.0	130	195	9.0	4.3
2.0	44.0	26.7	15.5	1.0	130	260	9.0	4.0
2.2	44.0	27.6	16.4	1.0	130	286	9.0	3.9
2.5	44.0	29.0	17.8	1.2	130	325	12.0	3.5
3.3	44.0	32.3	21.1	1.2	130	429	12.0	3.1
3.3	57.0	28.1	16.9	1.2	90	297	12.0	3.9
4.0	57.0	30.3	19.1	1.2	90	360	12.0	4.1
4.7	57.0	32.3	21.1	1.2	90	423	12.0	3.7
5.0	44.0	38.4	27.2	1.2	130	650	12.0	3.2
5.6	44.0	40.2	29.0	1.2	130	728	12.0	3.1
5.6	57.0	34.6	23.4	1.2	90	504	12.0	3.4
6.8	57.0	37.5	26.3	1.2	90	612	12.0	3.1
8.2	57.0	40.6	29.4	1.2	90	738	12.0	2.7
10	57.0	33.0	44.2	1.2	90	900	12.0	2.5

■ DIMENSIONS / 产品尺寸 :

SIZE R.V. CAP(μF)	850 V D C							
	W (mm)	H (mm)	T (mm)	d (mm)	dv/dt (v/us)	I peak (A)	I _{rms} @100KHz +25°C (A)	ESR @100KHz +25°C mΩ
0.15	32.0	11.4	6.6	0.8	300	45	4.5	10.0
0.22	32.0	13.1	8.3	0.8	300	66	5.5	8.4
0.33	32.0	17.2	9.2	0.8	300	99	7.0	6.6
0.47	32.0	19.5	11.5	1.0	300	141	9.0	5.4
0.68	32.0	22.5	14.5	1.0	300	204	9.0	4.3
0.68	44.0	18.9	10.9	1.0	200	136	9.0	5.4
1.0	32.0	28.0	16.8	1.2	300	300	12.0	3.2
1.0	44.0	21.9	13.9	1.2	200	200	9.0	4.3
1.5	44.0	27.4	16.2	1.2	200	300	12.0	3.5
2.2	44.0	31.8	20.6	1.2	200	440	12.0	2.9
2.2	57	27.7	16.5	1.2	110	242	12.0	4.3
2.5	44.0	33.5	22.3	1.2	200	500	12.0	2.7
2.5	57.0	29.1	17.9	1.2	110	275	12.0	4.1
3.0	44.0	36.1	24.9	1.2	200	600	12.0	2.4
3.0	57.0	31.2	20.0	1.2	110	330	12.0	3.6
3.3	57.0	32.4	21.2	1.2	110	363	12.0	3.5
4.7	57.0	37.4	26.2	1.2	110	517	12.0	3.1
5.0	57.0	38.4	27.2	1.2	110	550	12.0	2.7
5.6	57.0	40.3	29.1	1.2	110	616	12.0	2.5
6.8	57.0	43.8	32.6	1.2	110	748	12.0	2.3

Metallized Polypropylene Film Capacitor(Axial Lead) Snubber/Switching Application

SLV

■ DIMENSIONS / 产品尺寸 :

SIZE R.V. CAP(μF)	1000 V D C							
	W (mm)	H (mm)	T (mm)	d (mm)	dv/dt (v/us)	I peak (A)	Irms @100KHz +25°C (A)	ESR @100KHz +25°C mΩ
0.068	32.0	9.7	4.9	0.8	340	23.12	3.0	18.0
0.1	32.0	11.0	6.2	0.8	340	34	3.5	14.0
0.15	32.0	12.8	8.0	0.8	340	51	4.5	10.3
0.22	32.0	16.6	8.6	0.8	340	748	5.5	7.7
0.33	32.0	19.2	11.2	1.0	340	112.2	7.5	5.8
0.47	32.0	21.9	13.9	1.0	340	159.8	9.0	4.6
0.47	44.0	18.5	10.5	1.0	225	105.75	9.0	5.8
0.68	32.0	27.2	16.0	1.0	340	231.2	9.0	3.8
0.68	44.0	21.2	13.2	1.0	225	153	9.0	4.9
1.0	44.0	26.5	15.3	1.2	225	225	12.0	3.9
1.5	44.0	30.9	19.7	1.2	225	337.5	12.0	3.1
1.5	57.0	26.9	15.7	1.2	135	202.5	12.0	4.1
2.0	44.0	34.7	23.5	1.2	225	450	12.0	2.6
2.0	57.0	30.0	18.8	1.2	135	270	12.0	3.9
2.2	44.0	36.1	24.9	1.2	225	495	12.0	3.1
2.5	44.0	38.0	26.8	1.2	225	562.5	12.0	2.9
2.5	57.0	32.8	21.6	1.2	135	337.5	12.0	3.5
3.0	57.0	35.3	24.1	1.2	135	405	12.0	3.1
3.3	57.0	36.7	25.5	1.2	135	445.5	12.0	3.0
4.0	57.0	39.8	28.6	1.2	135	540	12.0	2.7
4.7	57.0	42.7	31.5	1.2	135	634.5	12.0	2.4

■ DIMENSIONS / 产品尺寸 :

SIZE R.V. CAP(μF)	1200 V D C							
	W (mm)	H (mm)	T (mm)	d (mm)	dv/dt (v/us)	I peak (A)	Irms @100KHz +25°C (A)	ESR @100KHz +25°C mΩ
0.1	32.0	12.6	7.8	0.8	390	39	3.5	13.5
0.22	32.0	19.0	11.0	0.8	390	85.8	6.5	7.1
0.33	32.0	22.2	14.2	1.0	390	128.7	8.5	5.3
0.33	44.0	17.9	9.9	1.0	255	84.15	7.5	6.1
0.47	32.0	27.3	16.1	1.0	390	183.3	9.0	3.7
0.47	44.0	20.4	12.4	1.0	225	105.75	9.0	5.6
0.68	44.0	23.6	15.6	1.0	225	153	9.0	4.9
1.0	44.0	29.3	18.1	1.2	225	225	12.0	4.1
1.2	44.0	31.4	20.2	1.2	225	270	12.0	3.7
1.5	44.0	34.4	23.2	1.2	225	337.5	12.0	3.2
1.5	57.0	29.8	18.6	1.2	150	225	12.0	4.2
2.0	57.0	33.4	22.2	1.2	150	300	12.0	3.6
2.2	57.0	34.7	23.5	1.2	150	330	12.0	3.4
2.5	57.0	36.6	25.4	1.2	150	375	12.0	3.0
3.0	57.0	39.5	28.3	1.2	150	450	12.0	2.7
3.3	57.0	41.1	29.9	1.2	150	495	12.0	2.6

Metallized Polypropylene Film Capacitor(Axial Lead) Snubber/Switching Application

SLV

■ DIMENSIONS / 产品尺寸 :

SIZE		1500 V D C							
R.V. CAP(μF)		W (mm)	H (mm)	T (mm)	d (mm)	dv/dt (v/us)	I peak (A)	I _{rms} @100KHz +25°C (A)	ESR @100KHz +25°C mΩ
0.068		32.0	12.4	7.6	0.8	490	33.32	3.5	16.1
0.1		32.0	16.2	8.2	0.8	490	49	4.5	12.0
0.15		32.0	18.7	10.7	1.0	490	73.5	6.0	8.7
0.22		32.0	21.6	13.6	1.0	490	107.8	8.0	6.5
0.22		44.0	18.2	10.2	1.0	320	70.4	7.5	8.5
0.33		32.0	27.1	15.9	1.0	490	161.7	9.0	4.7
0.33		44.0	21.1	13.1	1.0	320	105.6	9.0	6.4
0.47		44.0	26.1	14.9	1.2	320	150.4	12.0	5.1
0.68		44.0	30.0	18.8	1.2	320	217.6	12.0	4.4
1.0		44.0	35.0	23.8	1.2	320	320	12.0	3.3
1.0		57.0	30.3	19.1	1.2	210	210	12.0	5.1
1.2		57.0	32.5	21.3	1.2	210	252	12.0	4.5
1.5		57.0	35.6	24.4	1.2	210	315	12.0	3.9
2.0		57.0	40.2	29.0	1.2	210	420	12.0	3.3
2.2		57.0	41.8	30.6	1.2	210	462	12.0	3.2

■ DIMENSIONS / 产品尺寸 :

SIZE		2000 V D C							
R.V. CAP(μF)		W (mm)	H (mm)	T (mm)	d (mm)	dv/dt (v/us)	I peak (A)	I _{rms} @100KHz +25°C (A)	ESR @100KHz +25°C mΩ
0.047		32.0	12.4	7.6	0.8	650	30.55	3.0	20.5
0.068		32.0	14.3	9.5	0.8	650	44.2	4.0	15.0
0.1		32.0	18.4	10.4	0.8	650	65	5.5	11.6
0.15		32.0	21.4	13.4	1.0	650	97.5	7.5	8.2
0.15		44.0	18.1	10.1	1.0	410	61.5	6.5	10.0
0.22		32.0	26.7	15.5	1.0	650	143	9.0	5.7
0.22		44.0	20.8	12.8	1.0	410	90.2	9.0	7.2
0.33		44.0	26.2	15.0	1.2	410	135.3	12.0	5.5
0.47		44.0	29.9	18.7	1.2	410	192.7	12.0	4.5
0.56		44.0	32.0	20.8	1.2	410	229.6	12.0	3.7
0.68		44.0	34.7	23.5	1.2	410	278.8	12.0	3.7
0.68		57.0	30.0	18.8	1.2	225	153	12.0	5.4
1.0		57.0	35.0	23.8	1.2	225	225	12.0	4.3
1.5		57.0	41.5	30.3	1.2	225	337.5	12.0	3.5

Metallized Polypropylene Film Capacitor(Axial Lead) Snubber/Switching Application

SLV

■ DIMENSIONS / 产品尺寸 :

SIZE R.V. CAP(μF)	2500 V D C							
	W (mm)	H (mm)	T (mm)	d (mm)	dv/dt (v/us)	I peak (A)	I _{rms} @100KHz +25°C (A)	ESR @100KHz +25°C mΩ
0.033	32.0	13.5	8.7	0.8	870	287.1	3.0	26.0
0.047	32.0	17.3	9.3	0.8	870	40.89	4.0	19.1
0.068	32.0	19.7	11.7	0.8	870	59.16	5.0	14.5
0.1	32.0	22.9	14.9	1.0	870	87	6.0	11.0
0.1	44.0	19.2	11.2	1.0	550	55	7.0	14.2
0.15	32.0	28.7	17.5	1.0	870	130.5	8.5	7.6
0.15	44.0	22.4	14.4	1.0	550	82.5	7.5	9.3
0.22	44.0	27.9	16.7	1.2	550	121	10.0	6.8
0.33	44.0	32.6	21.4	1.2	550	181.5	12.0	5.2
0.39	44.0	34.9	23.7	1.2	550	214.5	12.0	4.6
0.47	44.0	37.7	26.5	1.2	550	258.5	12.0	4.2
0.47	57.0	32.6	21.4	1.2	280	131.6	12.0	5.8
0.68	57.0	37.9	26.7	1.2	280	190.4	12.0	4.8
1.0	57.0	44.7	33.5	1.2	280	280	12.0	3.9

■ DIMENSIONS / 产品尺寸 :

SIZE R.V. CAP(μF)	3000 V D C							
	W (mm)	H (mm)	T (mm)	d (mm)	dv/dt (v/us)	I peak (A)	I _{rms} @100KHz +25°C (A)	ESR @100KHz +25°C mΩ
0.01	32.0	10.3	5.5	0.8	1200	12	1.5	68.0
0.022	32.0	13.7	8.9	0.8	1200	26.4	2.0	31.5
0.033	32.0	17.8	9.8	0.8	1200	39.6	3.0	22.0
0.047	32.0	20.3	12.3	1.0	1200	56.4	5.0	16.0
0.068	32.0	23.4	15.4	1.0	750	51	7.0	12.0
0.068	44.0	19.6	11.6	1.0	750	51	6.0	15.0
0.1	44.0	22.8	14.8	1.0	750	75	7.5	11.0
0.12	44.0	26.3	15.1	1.2	750	90	8.0	10.0
0.15	44.0	28.6	17.4	1.2	750	112.5	10.0	8.0
0.18	44.0	30.6	19.4	1.2	750	135	10.0	7.0
0.22	44.0	33.2	22.0	1.2	750	165	12.0	6.0
0.22	57.0	28.8	17.6	1.2	370	81.4	12.0	7.7
0.33	57.0	33.8	22.6	1.2	370	122.1	12.0	6.2
0.47	57.0	39.1	27.9	1.2	370	173.9	12.0	5.5
0.56	57.0	42.2	31.0	1.2	370	207.2	12.0	5.1